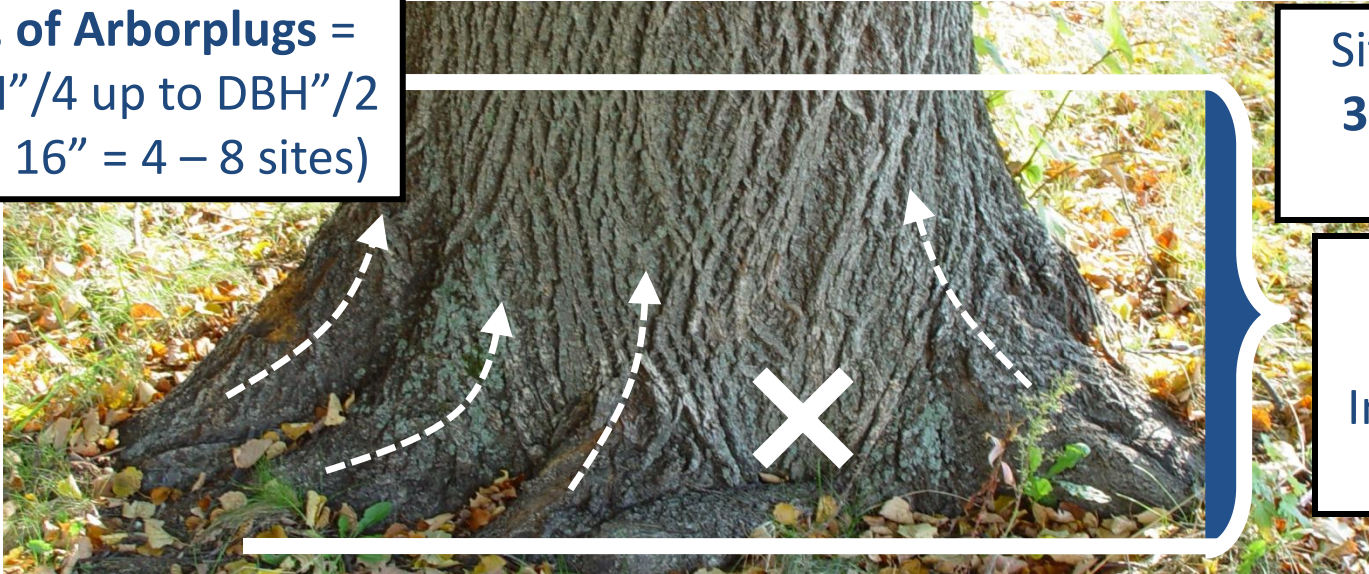


Select Arborplug™ Sites

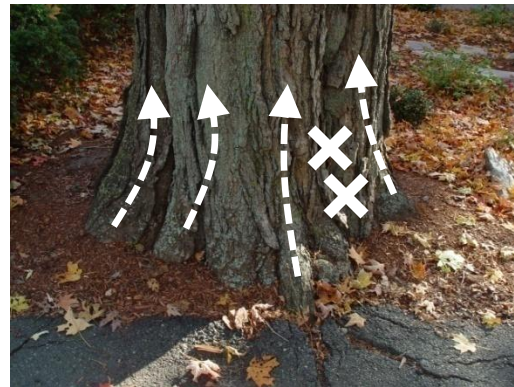
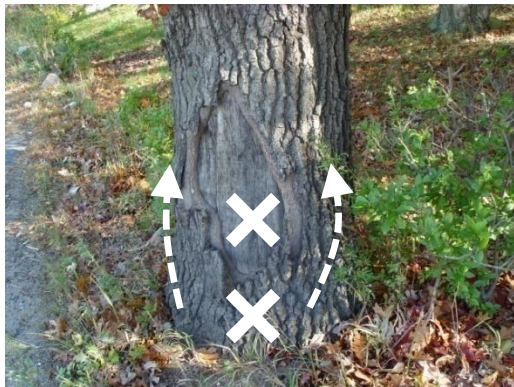
No. of Arborplugs =
DBH"/4 up to DBH"/2
(ex. 16" = 4 – 8 sites)

Sites are within
36" above the
soil line.

The Best
Arborplug
Injection Zone



Root Flares show best uptake and formulation distribution to the canopy.
Choosing good Arborplug sites result in faster injections.



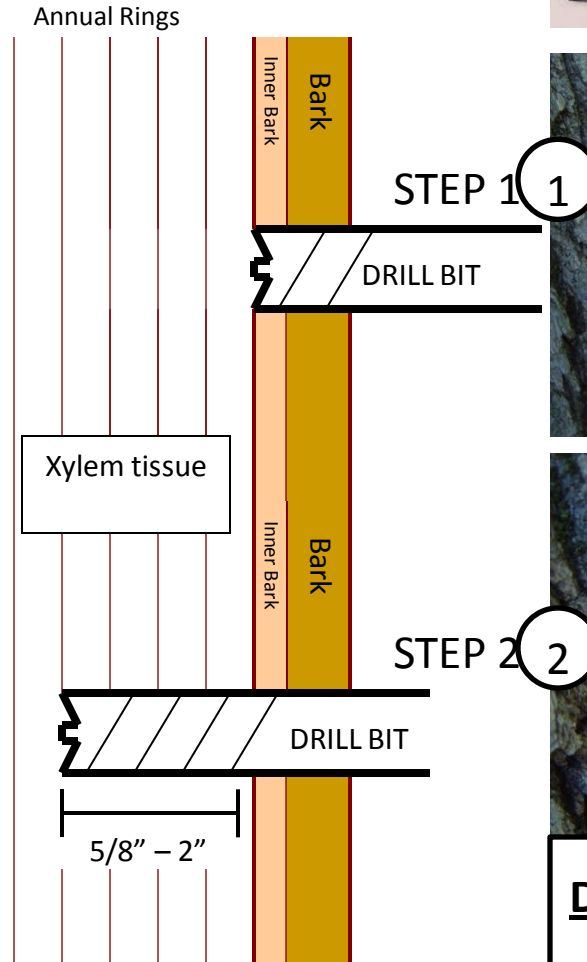
Drill Sites for Arborplug™

- **Use sharp, high-helix brad-point drill bits**
(included in kit).

- **For Beginners:**
Drilling in 2 Steps:

1. Use very light pressure to drill through outer bark and inner bark. The drill bit will stop at the Xylem. You can remove drill bit to note the bark thickness.
2. Use quick heavy pressure to drill into the Xylem.

Estimated Drill Depth into Xylem:
Hardwoods – 5/8" – 1 5/8" deep
Conifers – 1 5/8" – 2" deep



Drill Bit Sizes:

9/32" for #3 Arborplugs
3/8" for #4 Arborplugs

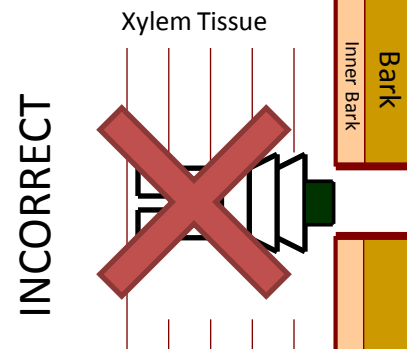
Set the Arborplug™



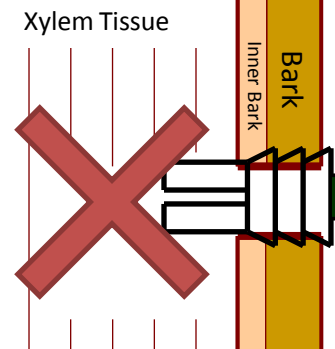
1. Set Arborplugs into drilled holes using set tool (from kit) and hammer.

2. Make sure the barbs on the Arborplug make a seal between the xylem and the inner bark as illustrated.

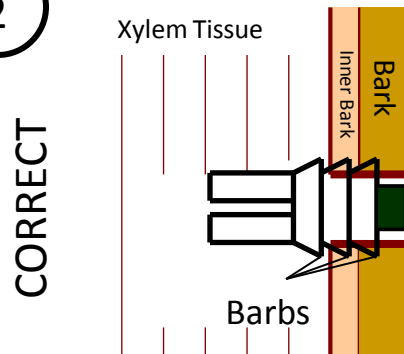
Too Deep



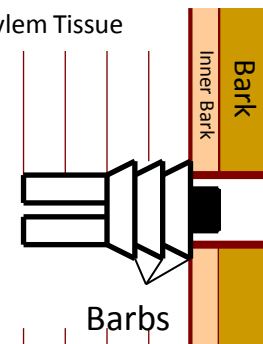
Too Shallow



2



Xylem Tissue



CORRECT

Procedure: Conifers vs. Deciduous

Conifer Injections:

Sap flows out of conifers as a protective response to drilling.
For best results, we recommend:

1. Pressurize Tree I.V. and prime each Needle Valve.
2. Drill and set 1 Arborplug
3. Insert 1 VIPER needle and turn on the Needle Valve.
4. Repeat steps 2 and 3 for each injection sites.

So insert VIPER needle and turn on valves right after each Arborplug is set. If you wait too long after Arborplug is set, sap may flow into your injection site, and make your uptake slower.

Deciduous Injections:

No sap flows from deciduous trees after drilling.
For best results, we recommend:

1. Pressurize Tree I.V. and prime each Needle Valve.
2. Drill and Set All Arborplugs.
3. Insert All Primed VIPER needles and turn on each Needle Valves.
4. Turn All Primed VIPER needles ON (same time)

Deciduous tree micro-infusion occurs very rapidly. Open all VIPER needle valves then open the bottle top valve. This will ensure that even distribution of product occurs at each injection site.

